

SEC. 8, 17, TWP. 38 S., RGE. 41 E.
SEC. 9, 16, TWP. 38 S., RGE. 41 E.

**B SURVEY S.R. 76
CURVE DATA**
P.I. STA. 1567+04.58
Δ = 20°35'47"(RT)
D = 00°35'00"
T = 1,784.68'
L = 3,530.84'
R = 9,822.18'
P.C. STA. 1549+19.90
P.T. STA. 1584+50.74

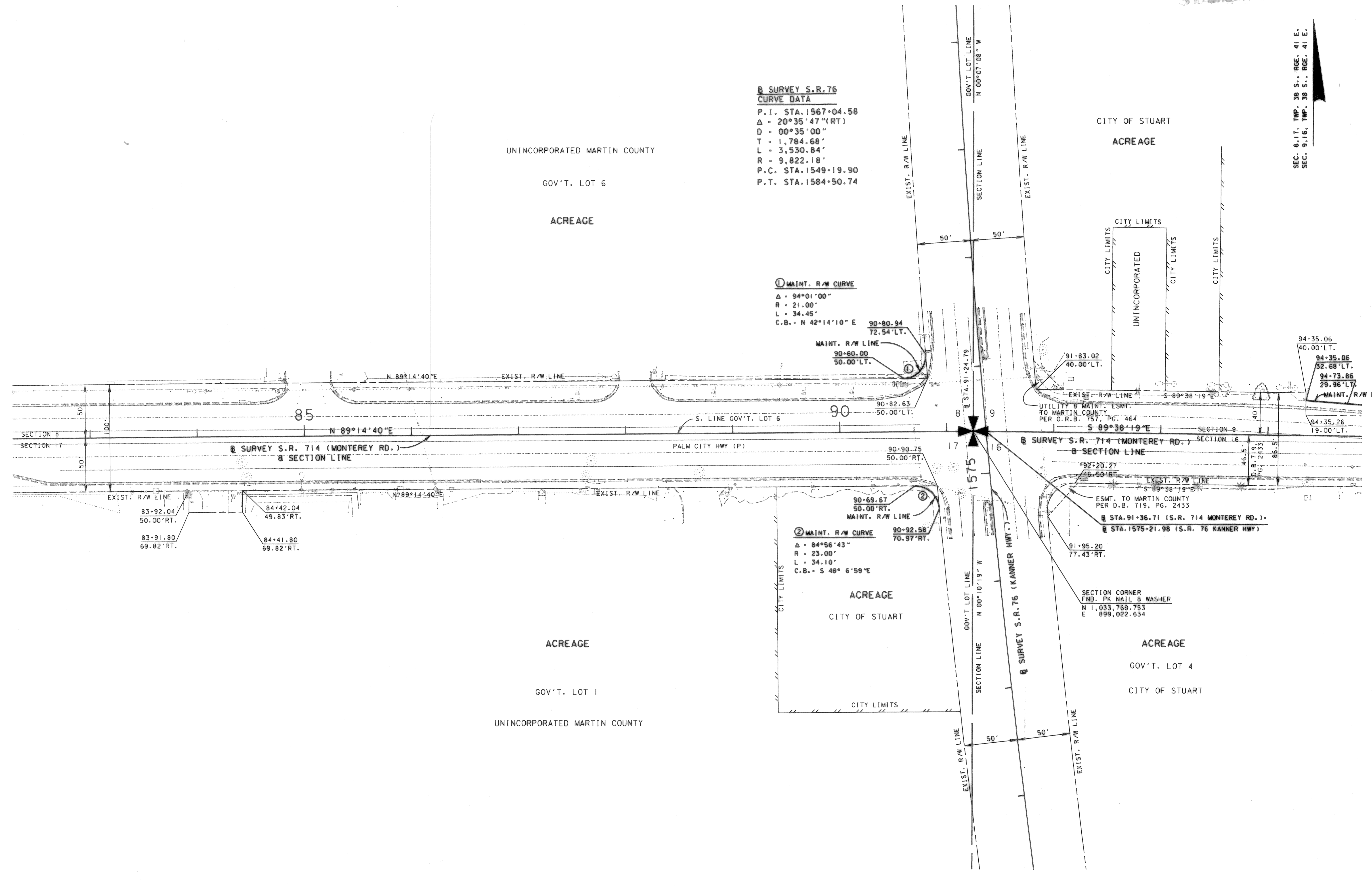
① MAINT. R/W CURVE
Δ = 94°01'00"
R = 21.00'
L = 34.45'
C.B. = N 42°14'10" E

90-80.94
72.54'LT.
MAINT. R/W LINE
90-60.00
50.00'LT.

② MAINT. R/W CURVE
Δ = 84°56'43"
R = 23.00'
L = 34.10'
C.B. = S 48° 6'59"E

90-69.67
50.00'RT.
MAINT. R/W LINE
90-92.58
70.97'RT.

SECTION CORNER
FND. PK NAIL & WASHER
N 1,033,769.753
E 899,022.634



SEE SHEET ONE FOR LEGEND AND GENERAL NOTES

S.R. 714 (MONTEREY ROAD) FROM S.W. PALM CITY ROAD TO S.R. 5 (U.S. 1-FEDERAL HIGHWAY)

MAINTENANCE MAP	FLORIDA DEPARTMENT OF TRANSPORTATION RIGHT OF WAY MAPPING	APPROVED BY	DATE	BY	DATE	FED. PROJ. NO. N/A	SECTION 89092-MAINT.(1)	MAPS PREPARED BY	FIELD BOOK NO.'S
		<i>Jeffrey Smith</i>	11/20/03	MORAVA	03-17-03			F.D.O.T. DISTRICT 4	
		DISTRICT RIGHT OF WAY SURVEYOR		MORAVA	03-31-03	STATE ROAD NO. 714	MARTIN COUNTY	W.P.I. NO. N/A	SCALE: 1" = 40'
				BROWN	06-25-03	ITEM/SEGMENT NO. 2288621			SHEET 3 OF 8